

## Bláthanna. Cuid 1: An t-Earrach.



### Bláthanna

Posted on 27/04/2014 by Múinteoir Gearóid



Clic [anseo](#) chun raon pictiúr a fheiceáil

Kahoot Quiz based on pictures Bláthanna an Earraigh featured above [anseo](#):

## Bláthanna ag fás san earrach i Scoil Raifteirí:



Anenomes ag fás sa seomra ranga

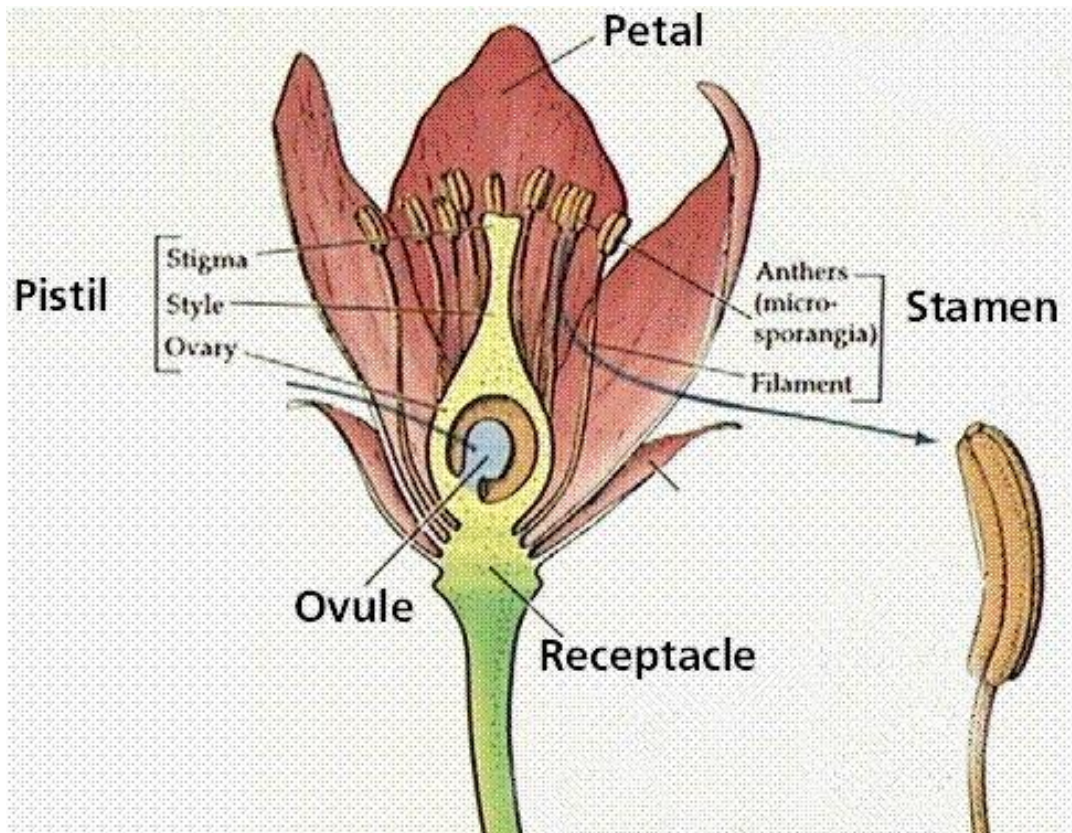


Here's one of the Anenomes in bloom



Here's a poor daffodil which has been drinking green food colouring!

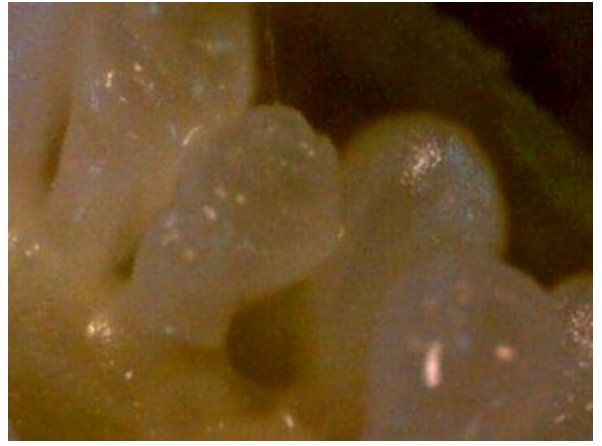
# An Bláth



## Seo na síolta ón lus an chrom cinn



x 10



x 60



Aiteann (Gorse, Whins or Furze)



Samhaircíní (Primroses)



An Poipín (Poppy)

agus

Nóiníní (Daisies)



Bainne Bó Bleachtáin (Cowslip)



Caonach (moss): na bláthanna



Crann silíní (Cherry Blossoms)



Cnó Capaill



Male and Female flowers of the Hazel



Bláthanna ar an Leamhán (Elm)



An Dair



Seo crann darach freisin!



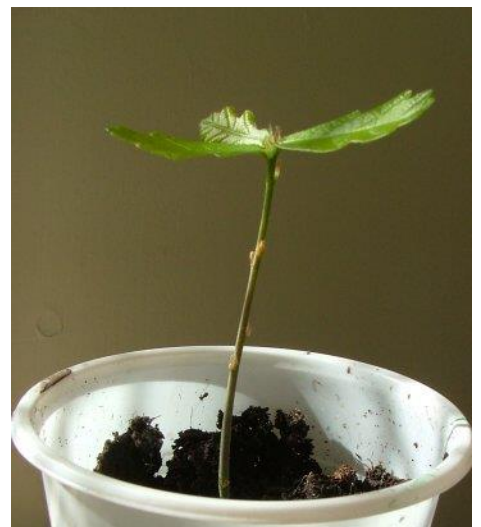
Seo an bealach a bhris an dearcán  
Fásfaidh crann mór ón dearcán seo!

You can see the root going down and the shoot going up



Thosaigh sé ag fás san earrach

We grew this baby oak tree from an acorn







Seo an choill sa rang



